

After a period as part of the Kingdom of Mallorca Ibiza reverted to Catalanian rule, then backed the losing side in the War of the Spanish Succession (1702-14) and was made a Spanish province as a result. It gradually became a cultural and economic backwater, emigration adding to a population decline begun by the Black Death 400 years earlier.

During the Spanish Civil War Ibiza declared for Franco, only to be rebuffed by the Republicans and occupied for a six-week period when considerable damage was done to churches and other buildings.

In the past Ibiza's main wealth came from the export of the 'red' salt which was particularly valued – even today over 100,000 tons are exported each year. Fruit, grain and shellfish are other exports of importance. During the last fifty years the tourist trade has expanded into a major industry and the island, which was in the past a haven for the simple life and values, has been dragged into the 20th century. In particular both Ibiza and Formentera became favourites with the so-called 'hippie' culture, a legacy still to be detected in a marked tolerance towards unusual clothes and non-mainstream lifestyles. The construction of apartment blocks for tourists continues apace, together with large numbers of tourist shops, cafés, bars, restaurants and related services.

Places of interest

The church of Nostra Señora in the small village of Jesús just north of Ibiza city contains a famous (and very beautiful) altarpiece dating back to the early 16th century.

In the northern part of the island lie Balafia, a fortified Moorish village just outside San Lorenzo, and the Es Cuyeram cave which was once a Carthaginian temple to the goddess Tanit (also accessible from the anchorage at Cala de San Vicente). If travelling by car, take the road north from Ibiza city towards San Juan Bautista and Cala Portinatx.

In the southwest, the Carthaginian and Roman remains at ses Païses de cala d'Hort (near Cala Horts) make an interesting visit. Inland lies Ibiza's highest point, Atalayasa, near the village of San José. Further east, on the road to Ibiza, are the caves of Cova Santa, also accessible via a track from Cala Yondal.

Fiestas

In addition to the national holidays and *fiestas* listed in the introduction the following dates are celebrated in Ibiza: 17 January – San Antonio (San Antonio); 12 February – Santa Eulalia (Santa Eulalia del Río); 23 April – San Jorge (San Jorge); First Sunday in May – Festival of Flowers (Santa Eulalia); 24 June – San Juan Bautista (San Juan); 1-8 August – Our Lady of the Snows, patron saint of the Pitiusas Islands (Ibiza); 10 August – San Lorenzo (San Lorenzo); 15 August – Cala Llonga; 16 August – Our Lady of Carmen, sea procession (Ibiza); 24 August – San Bartolomé (San Antonio);

28 August – San Augustin (San Augustin); 21 September – San Mateo (San Mateo); 29 September – San Miguel (San Miguel).

Factual information

Magnetic variation

Ibiza – 1°45'W (decreasing 7'E annually) (1997)

Approach and coastal passage charts

Admiralty 1701, 1702, 2834

Spanish 7A, 478, 479

French 5505, 7114

Approach lights

0261 **Aeropuerto** 38°52'7N 1°22'3E

Aero AIFL.WG.3s16m Control tower 9m

Occas. Situated 1M inland

0278 **Isla Vedrá** 38°51'9N 1°11'5E

Fl.5s21m11M White conical tower 3m

262°-vis-134°

0276 **Isla Bleda Plana** 38°58'9N 1°09'6E

Fl(3)15s28m10M White round tower 8m

349°-vis-239°

0274 **Isla Conejera** 38°59'7N 1°12'9E

Fl(4)20s85m18M

White tower and building 18m

0270 **Punta Muscarté** 39°07'1N 1°32'E

Fl.5s93m18M White round tower, black

diagonal stripes 52m 074°-vis-294°

0268 **Isla Tagomago** 39°02'1N 1°39'3E

Fl(1+2)WR.30s86m17M Grey octagonal

stone tower on building 23m

043.5°-W-037°-R-043.5°

(Red sector covers Bajo de Santa Eulalia)

Radiobeacons

1033 **Ibiza Aero** 38°55'N 1°28'3E

IBZ, 394kHz 60M (Non A2A)

Puerto de Ibiza (Eivissa)

38°54'7N 1°26'7E

Charts	Approach	Harbour
Admiralty	2834	2834
Spanish	7A, 478, 479, 479A	4791
French	7114	7114

Lights

Approach

0262 **Islote Dado Grande** 38°53'5N 1°27'2E

Fl(2)10s13m6M

Black tower, red band, ♀ topmark 6m

0264 **Islote Botafoch** 38°54'3N 1°27'3E

Oc.WR.7s31m7M Horn(2)10s White tower and house, grey lantern and cupola 16m

034°-R-045° (over Islas Malvins and Esponja)

045°-W-034° Obscured over N Lladós

by Isla Grossa

Entrance

0264.4 **Northeast (Marina Botafoch) breakwater**

head 38°54'7N 1°27'E Fl(2+1)G.11s6m6M

Green column, red band, on white base

displaying green ▲ 3m

- 0264.5 **Breakwater spur** 38°54'·7N 1°27'E
Fl(2)R.5s2m2M Red post 1m
- 0264.6 **Marina Botafoch, inner mole**
38°54'·7N 1°27'E Fl(2)G.5s2m2M Green post 1m
- 0265 **Southwest breakwater** 38°54'·7N 1°26'·6E
Fl.R.3s12m7M White truncated conical
tower on building, red cupola 11m
Obscured west of Islotes Malvins
- 0265.6 **Puerto Deportivo Ibiza Nueva, south mole**
38°54'·8N 1°26'·7E Fl.G.3s12m5M
Green column on white base displaying green ▲ 11m
- 0265.8 **Puerto Deportivo Ibiza Nueva, north mole**
38°54'·9N 1°26'·7E Oc.R.4s7m3M
Red tower on office building 6m
- 0265.9 **SW head** 38°54'·9N 1°26'·6E
Fl(2+1)G.21s12m3M
- 0266 **Contramuelle, NE corner**
38°54'·8N 1°26'·4E
Fl(2)R.7s6m2M Red metal column 4m
- 0266.2 **NW corner**
38°54'·7N 1°26'·4E
Fl(3)R.9s6m3M Red metal column
- 0267 **W breakwater head** 38°54'·8N 1°26'·5E
Fl(2)G.7s6m2M Green metal column 4m
- 0267.2 **Commercial mole, southwest corner**
38°54'·9N 1°26'·4E
Fl(3)G.9s6m2M Green metal column 4m

Radiobeacons

- 1033 **Cabo Martinet Aero** 38°55'N 1°28'·3E
Aerobeacon IBZ, 394kHz 60M (Non A2A)

Port Communications

- VHF – Pilots (*Ibiza Prácticos*) Ch 12, 13, 14, 16;
Marinas Ch 6, 9, 16.
- ☎/Fax – Port Authority 971 310611; Marina Botafoch
☎ 971 311711, 313013, 312231, Fax 971 311557;
Puerto Deportivo Ibiza Nueva ☎ 971 314050, 971
312062, Fax 971 313523; Club Náutico de Ibiza
☎/Fax 971 313363.

General

Puerto de Ibiza offers excellent facilities for yachts and a harbour which is easy to enter under most conditions and gives good shelter, though in strong east-southeast-south winds the marinas suffer from swell. It is, however, an expensive place to stay and in summer a berth may be hard to find. On occasions the harbour water becomes dirty and oily.

Sadly the description in previous editions of 'a charming little port for commercial fishing boats and yachts' is no longer true. Although a small part of the old town and citadel is still unspoilt, massive and apparently uncontrolled tourist development is taking place and changing the character of both town and harbour completely. The city has become an international tourist centre, very overcrowded in the summer, while even in winter the locals are outnumbered by foreign visitors and residents.

The city was founded during the 6th century BC by the Carthaginians, who are thought to have occupied the hill now known as D'Alt Vila (the old town) and to have referred to both town and island as *Ibasim*. On the western slopes of the hill is the Puig des Molins necropolis, a subterranean burial

place which served the city from the Phoenician era (7th century BC) until Roman times. It is open to the public, together with an interesting museum. Parts of the cathedral date back to the 13th century, shortly after the island was reconquered for Spain, but the great citadel walls were built in the late 16th century and bear the arms of King Phillip II. The D'Alt Vila is well worth a visit and contains, amongst many other interesting buildings, the cathedral and the Archaeological Museum.

Fiestas are held on the Friday night of Holy Week (Good Friday), on 24 June to celebrate the king's name saint (San Juan), and 1-8 August in honour of *La Virgen de las Nieves*, patron saint of the island. On 16 August there is a sea procession as part of the *Fiesta del Virgen del Carmen*.

Approach

From south Several potential hazards litter the southern approach. As encountered these are: Islote La Esponja (10m), one mile east of Isla Sal Rossa, Malvins del Sur (20m) and Malvins del Norte (12m), 1.1 and 0.9 mile south of Pta Marloca, and Dado Grande (7m) and Dado Pequeña (9m) about 0.8 mile south of Isla Botafoch. All lie near or outside the 20m contour and in daylight can be left on either hand.

If approaching at night with the light on Dado Grande not in evidence it would be wise to pass outside all these hazards – a bearing of 345° or less on Isla Botafoch ensures safe water. Isla Botafoch shows a red sector over Esponja and the Islas Malvins, but this does not cover Dado Grande and Pequeña. If the light on Dado Grande is seen it can safely be left to starboard.

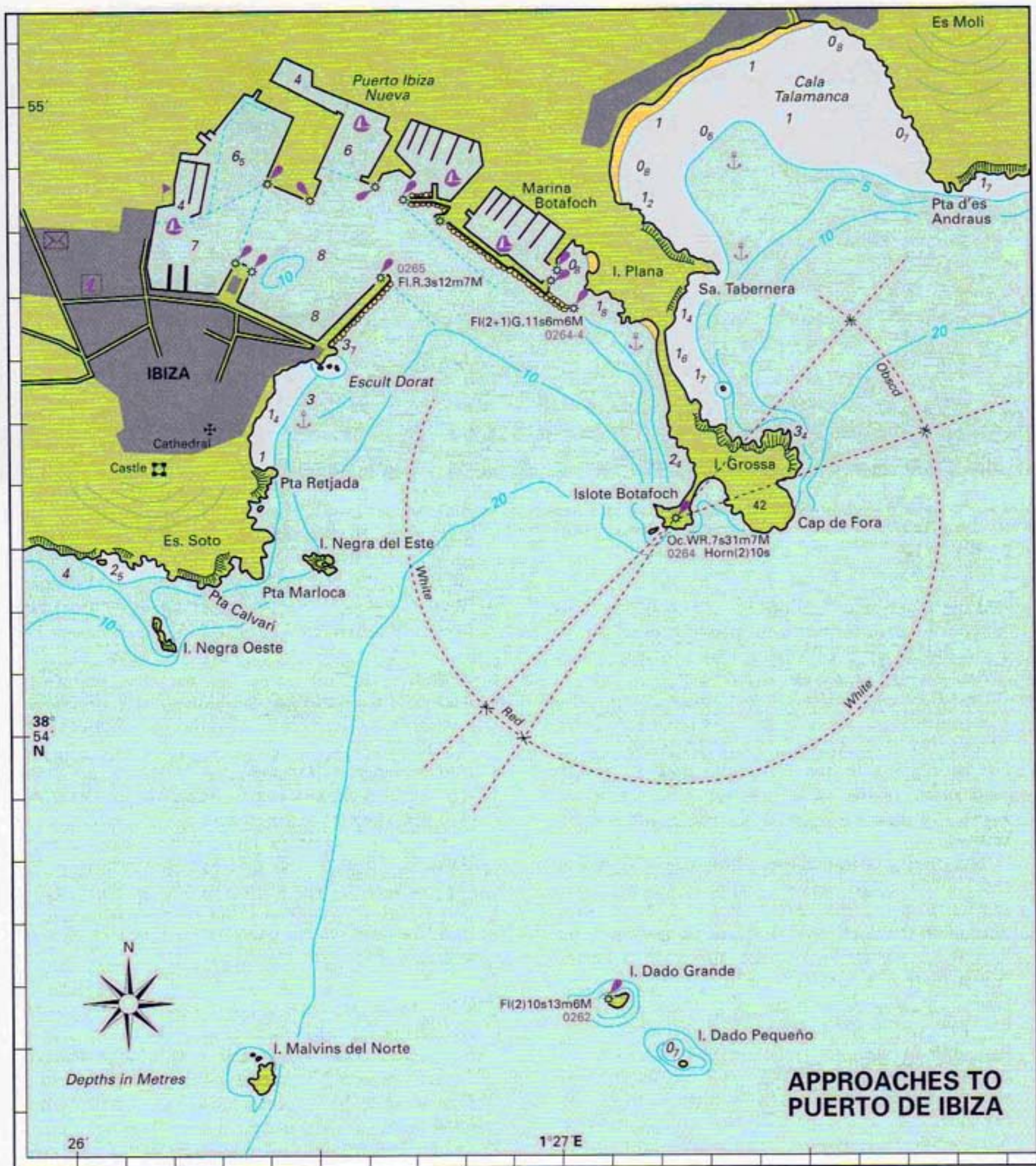
From northeast If coastal sailing from the northeast end of the island, or approaching from the direction of Mallorca, refer to page 46 for details of the passage inside Isla Tagomago and page 48 for Isla de Santa Eulalia. After passing Puerto de Santa Eulalia, Cabo Llibrell should be given a least offing of 200m, then the two small islands Lladó del Norte (10m), and Lladó del Sur (6m) identified just under a mile northeast of Cabo Martinet. Once spotted they can safely be passed on either side. Cabo Martinet, Isla Grossa and Isla Botafoch are all steep-to, though the latter has a small offlier close inshore.

Anchorage in the approach

In fine weather it is possible to anchor 200m off the cliff due east of the cathedral in 6m over sand and weed, but it is shallow close in. Alternatively in northeasterly or easterly winds shelter can be found close in to the Isla Grossa peninsula, between Islote Botafoch and the entrance to Marina Botafoch, in 5–6m over rock and weed. Holding is reported to be poor. Both of these anchorages are made roly by wash from ferries and other port traffic.

Entrance

Large commercial ships and many ferries use the harbour – they have right of way and must not be



obstructed. For this reason it is advisable to keep to the starboard side of the entrance but there are no other navigational hazards. Isote Negra del Este and Isote Botafoch are both steep-to and there are good depths (ie. more than 5m) in the entrance and throughout the commercial harbour.

Berthing

Once in the harbour there are several choices for berthing, though all are likely to be crowded in the high season:

- **Marina Botafoch** An upmarket marina ☎ 971 311711, 313013, 312231, Fax 971 311557 with over 400 berths, able to take yachts of up to 30m, and with excellent facilities (see below). The office staff are helpful and several speak English.

The entrance lies outside the harbour proper, some 0.4 mile north of the Isote Botafoch from which it takes its name. Although reasonably wide, the entrance does not open up until well inside a line from Isote Botafoch to the end of the northeast (Marina Botafoch) breakwater and



The approach to Puerto de Ibiza from just east of south. Islote Botafoch and lighthouse are to the right, Marina Botafoch in the centre and the south breakwater on the left.

can therefore be difficult to identify. The fuel and reception berth is on the starboard side on entry, with the marina offices nearby. A ferry plies across the harbour into town.

- *Puerto Deportivo Ibiza Nueva* Expanding into the old commercial basin to the west has made Ibiza Nueva (☎ 971 312062, Fax 971 313523) the largest marina in the port with well over 500 berths for yachts of up to 40m. Facilities are good, though some of the berths are rather remote.

The dogleg entrance (see photo page 26) to the right of a large yellow building presents no particular problems and carries 3.5–4m depth. Secure on the north side of the north mole (where fuel is also available) to be allocated a berth. Again there is a ferry service into town.

- *Club Náutico de Ibiza* Situated at the head of the harbour and small compared to its neighbours, the Club Náutico de Ibiza (☎/Fax 971 313363) normally reserves twenty outside berths for visiting yachts (berths inside the harbour are private). These can be oily and are exposed to ferry wash - the use of 'spring coil' type shock absorbers is recommended or use the *club náutico* lines which have car tyres as springs.
- *Port Authority pontoons* The two pontoons situated in the extreme southwest of the harbour, south of the *club náutico*, are now totally reserved for local vessels with card access to the pontoons. There is a further pontoon just inside the southwest breakwater but an uneven and shallowish (<2m) bottom has been reported (1999) and it really only caters for 5-metre length craft. Following the dredging mentioned in the 6th edition the whole of the area between the SW breakwater and the inner mole (now the ferry station) is devoted to RoRo ferries. It was noticed

that some large (20m+) visiting vessels were moored on the west side of this mole amongst the local ferries and work boats. Lazy lines, water and electricity are laid on but it is understood that in high season it is completely full of local working boats and ferries.

Charges (see page 6)

- *Marina Botafoch* High season daily rate - Band A; low season daily rate - Band C. Water and electricity extra.
- *Puerto Deportivo Ibiza Nueva* High season daily rate - Band A; low season daily rate - Band A. Water and electricity included.
- *Club Náutico de Ibiza* High season daily rate - Band C (15m), Band B (10m); low season daily rate - Band B. Water and electricity included.
- *Port Authority pontoons* High season daily rate - Band D; low season daily rate - Band D. Water and electricity extra.

Facilities

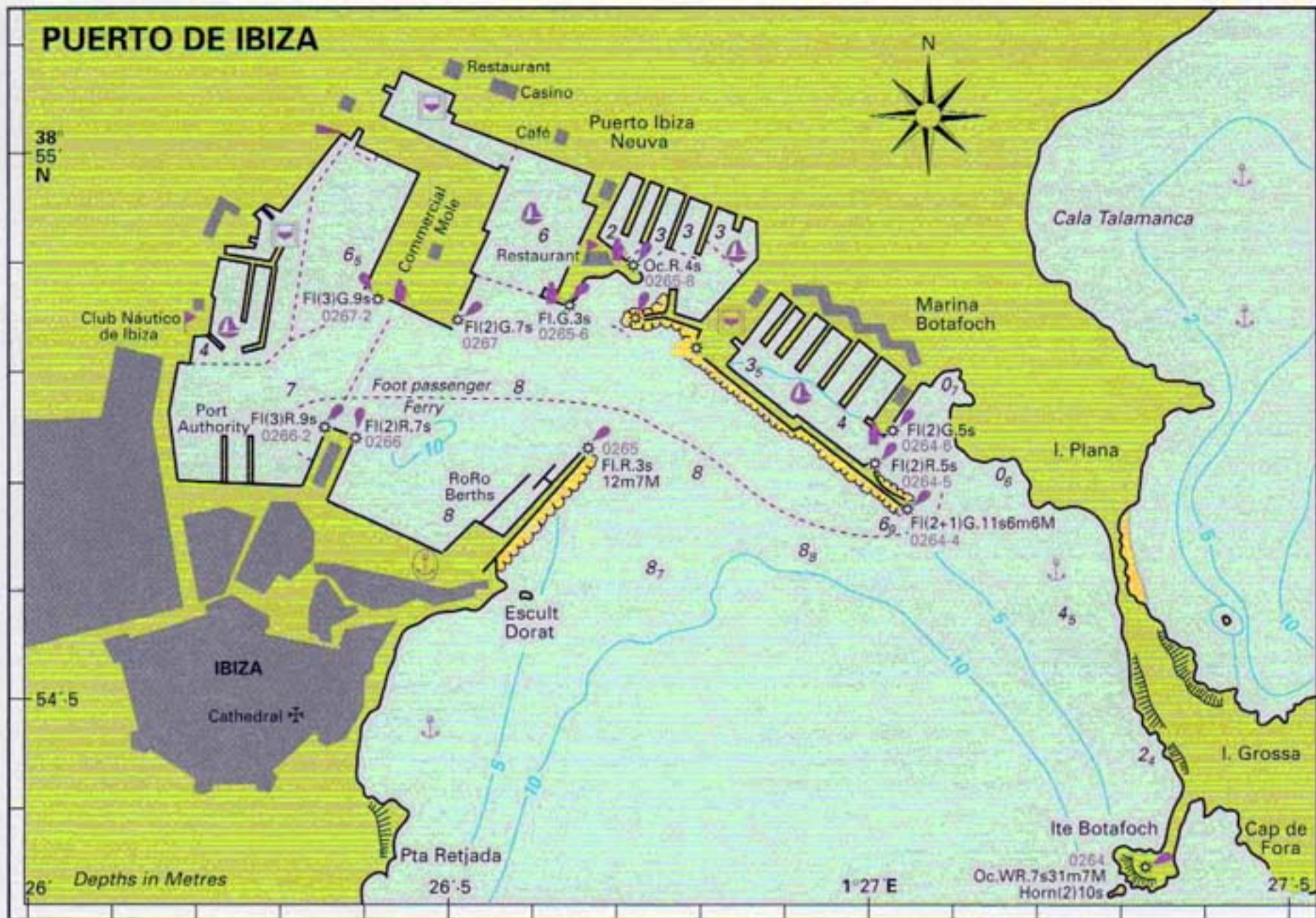
Boatyards The biggest is situated just north of the *club náutico* but is actually part of the Puerto Deportivo Ibiza Nueva, as is the yard at the head of their west basin. Smaller concern at Marina Botafoch.

Travel-lift 100 tonnes and 27 tonnes at Ibiza Nueva yards, 62 tonnes at Marina Botafoch.

Sliptway Close north of the *club náutico*.

Engineers Marina Botafoch and Ibiza Nueva boatyards, also Yates Ibiza ☎/Fax 971 190326 just north of the *club náutico* and Ibiza Yacht Service ☎ 971 310617, Fax 971 310656 at the head of the Ibiza Nueva west basin.

Official service agents include: Auto Recambios Isla ☎ 971 311012, 313700, Fax 971 316966 - Yamaha; Ibiza Yachting ☎ 971 341159 - Johnson; Marina Marbella Ibiza SA ☎ 971 310811 - Mercury/MerCruiser, Volvo Penta; Motonautica ☎ 971 306665, Fax 971 306662 - Honda, Mercury/ MerCruiser, Soler, Suzuki,



Yanmar; Servinautic ☎/Fax 971 311963 – Mariner, MerCruiser, Volvo Penta.

Electronic & radio repairs Both marina boatyards, Nautronic at Marina Botafoch, Yates Ibiza and Ibiza Yacht Service.

Sailmaker At the Polígono Eurocentro ☎ 971 311660. Also services inflatable dinghies and liferafts.

Chandlery Well-stocked chandleries at the Marina Botafoch and across the road from the club náutico.

Water At all berths listed above. The water in Ibiza is of variable quality – if possible consult other yachtsmen before filling tanks.

Showers At both marinas and the club náutico.

Electricity At all berths listed above. Normally 220 volt, but 380 volts available at large yacht (25m±) berths in the two marinas.

Fuel At both marinas. Ibiza Nueva has two fuelling points (see plan).

Bottled gas Camping Gaz exchanges at chandleries or in town. Note that Calor Gas bottles are not refillable on the islands now.

Ice In the supermarkets at the marinas and in the club náutico bar.

Yacht club The Club Náutico de Ibiza has a bar, lounge, terrace, showers and restaurant. Note that Calor Gas bottles are not refillable on the islands now.

Banks In the town, many with credit card facilities.

Shops/provisioning Supermarkets at both marinas plus excellent choice in the town.

Market All day Friday in summer.

Hotels/restaurants/café, etc. Restaurants, cafés and bars at both marinas plus vast numbers in the town. Hotels of all ratings, including one in the Marina Botafoch complex.

Laundrettes At both marinas and in the town.

Hospital/medical services In the town.

Communications

Car hire/taxis In the town, or arrange through marina offices.

Buses Regular services over most of the island.

Ferries Car ferries to mainland Spain and Mallorca. Frequent tourist ferries and hydrofoils to Formentera and various beaches.

Air services International airport 3½ miles south of the harbour.

Islets to the south of Puerto de Ibiza

Several small islets lie in the bay south of Puerto de Ibiza. From north to south these are: Dado Grande (Dau Gran) (7m) and Dado Pequeña (Dau Petit) (9m) about 0.8 mile south of Islote Botafoch. Dado Grande is supposedly marked by a lit black and red beacon, but this was missing in May 1996; Malvins del Norte (12m) and Malvins del Sur (20m) 0.9 and 1.1 miles south of Pta Marloca, and Islote La Esponja (10m), one mile east of Isla Sal Rossa. All lie near or outside the 20m contour and can be left on either hand.



Looking east over Puerto Deportivo Ibiza Neuva and Marina Botafoch, with Cala Talamanca in the background.

Looking southeast over Puerto de Ibiza on a very clear day. The old walled city is on the right, flanked by the wedge-shaped Isote Negra del Este and, further away, the twin rocks of Dado Grande and Dado Pequeño (the former missing its tower and topmark).

